

The choice of Pathologists



The PM range by
Swann-Morton[®]

A versatile and comprehensive range for Pathologists

As part of their diverse range of Surgical Blades and Handles, Swann-Morton offer two handle and blade combinations specifically for use within Post Mortem examination. The PM40 and PM60 range are used by Pathologists during Forensic and Clinical Autopsy procedures and for Post Mortem diagnosis, the quality of which meets the same exacting high standards for which Swann-Morton are renowned amongst the medical and related health care professions worldwide. The PM40B and PM60B "bull nose" blades provide improved safety and protection for the clinician against accidental sharps injuries in addition to the 22B blade which is used with a standard No.4 stainless steel surgical handle.

The heavy duty carbon steel blade No's PM40 and PM40B are both used during Post Mortem examinations and fit the standard "blue" coated or "plated" PM40 Handles using a traditional screw fitting.

An autoclavable, solid-cast stainless steel handle was more recently added to the range with a screw fitting incorporated in the top section only. This handle is supplied singly in a protective plastic wallet. The length of the handle with blade is approximately 220mm.

Alternatively we have the PM8 handle which is a light yet strong stainless steel handle with the standard surgical type of fitment*. This is again supplied singly in a protective plastic wallet for use with the carbon steel blade No's PM60 and PM60B**. The length of the handle with blade is approximately 185mm and the PM60 range is the preferred choice of Pathologists and Morticians in the USA.



PM22B Range blade

Product	Product No	Unit
PM22B	2590	Box of 100

PM22B Range Handle

Product	Product No	Unit
No4 Graduated	0934	Box of 10

PM40 Range blades

Product	Product No	Unit
PM40 Standard	2551	10 blades
PM40B	2552	individually packed

PM60 Range blades

Product	Product No	Unit
PM60 Standard	2560	50 blades
PM60B	2561	individually packed

PM40 Range Handles

Product	Product No	Unit
PM40 Stainless	2650	1 handle
PM40 Standard	2652	1 handle
PM40 Plated	2653	1 handle

PM60 Range Handles

Product	Product No	Unit
PM8 Stainless	2609	1 handle
For use with 60 and 60B blades		

* The blade fitment on the PM8 Handle is "not" compatible with other standard range surgical blades. ** The PM60B blade can also be referred to as the PM70 blade. Note: A number of blades from the heavy duty Swann-Major blade and handle range plus the No.22 standard blade shape are utilised by both Pathologists and Morticians. For further related product information please visit www.swann-morton.com

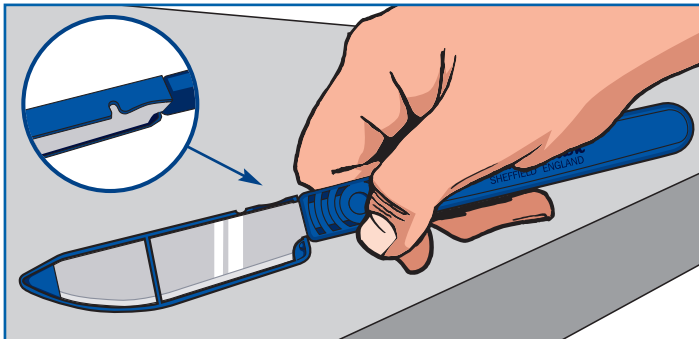
The Post Mortem Disposable Scalpel guarding against infection

The non-sterile Swann-Morton Disposable Post Mortem Scalpel is the latest addition to a growing range of histopathology and autopsy knives.

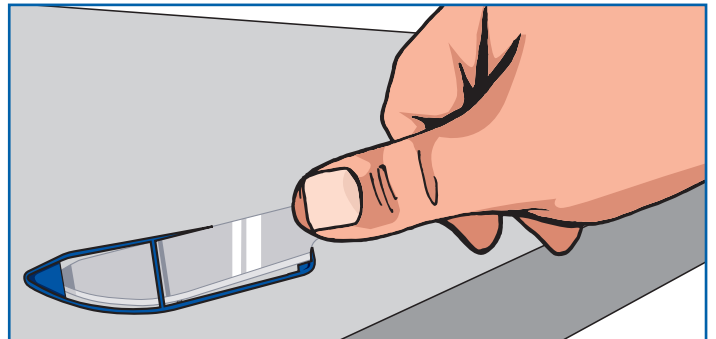
With an easy to remove guard to protect the cutting edge up to the point of procedure the end user has the added convenience of not having to fix the blade to the handle and can safely dispose of the scalpel into an appropriate sharps container when the procedure is complete.

Targeted at “dirty” and “infectious” cases the Disposable Post Mortem Scalpel is available with either the standard PM40 or PM40 Bull Nose blade fixed in a distinctive blue handle.

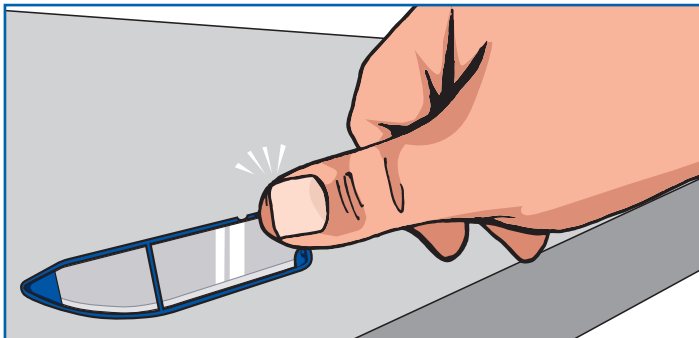
How to safely remove the blade guard



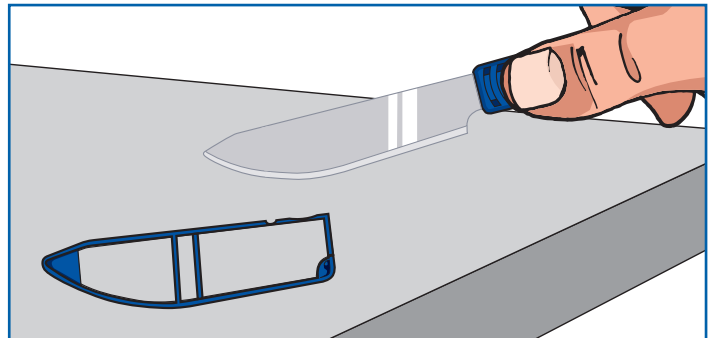
1 Preferably place the Disposable Scalpel over a stable flat surface and identify the guard remover impression highlighted in the illustration.



3 The guard and Disposable Scalpel will now be separated from each other.



2 With your thumb located in the guard remover impression press downwards with your thumb and the guard will release with an audible click.



4 The blade is now fully exposed and the Scalpel is ready for use.

Post Mortem Disposable Scalpel

Post Mortem Scalpels - Non Sterile Individually sealed in a pouch

Product	Product No	Unit
PM40	2580	Box of 5
PM40B	2581	Box of 5
Bulk packed		
PM40	2582	Box of 100
PM40B	2583	Box of 100



The PM Range by Swann-Morton

The PM40 range with its traditional "Screw Fitting" heavy duty Stainless Steel handle and the PM60 range with a standard surgical type of fitment both include bull nose blades for added safety and protection against accidental sharps injuries. A versatile and comprehensive range for Morticians and Pathologists for use in Autopsy, Histopathology and general Post Mortem procedures.



EMS 633531



FM 73368



Scan this code for more product information

Swann-Morton and the 'ring pattern' logo are registered trademarks of Swann-Morton Limited and related companies. The products shown are manufactured for use by trained health care professionals and can cause injury if used or handled incorrectly. The information and illustrations used in connection with the products shown on this leaflet are for general guidance only and users must seek proper training and instruction in their use before using or handling such products. Swann-Morton Limited exclude all liability for injury to the extent permitted by law. Products images for illustration purposes only and are not to scale.

Swann-Morton[®]
Sheffield - England

Swann-Morton Ltd. Penn Works, Owlerton Green, Sheffield S6 2BJ
Telephone: 0114 2344231, Sales 0114 2344223, Fax: 0114 2314966
uksales@swann-morton.com, exportsales@swann-morton.com
orders@swann-morton.com, www.swann-morton.com